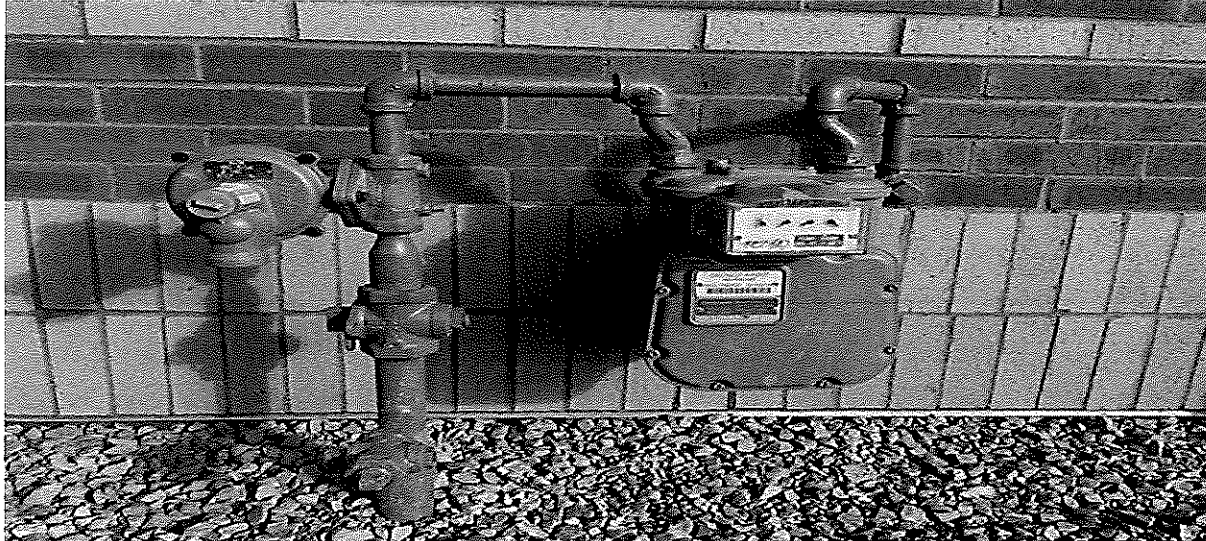


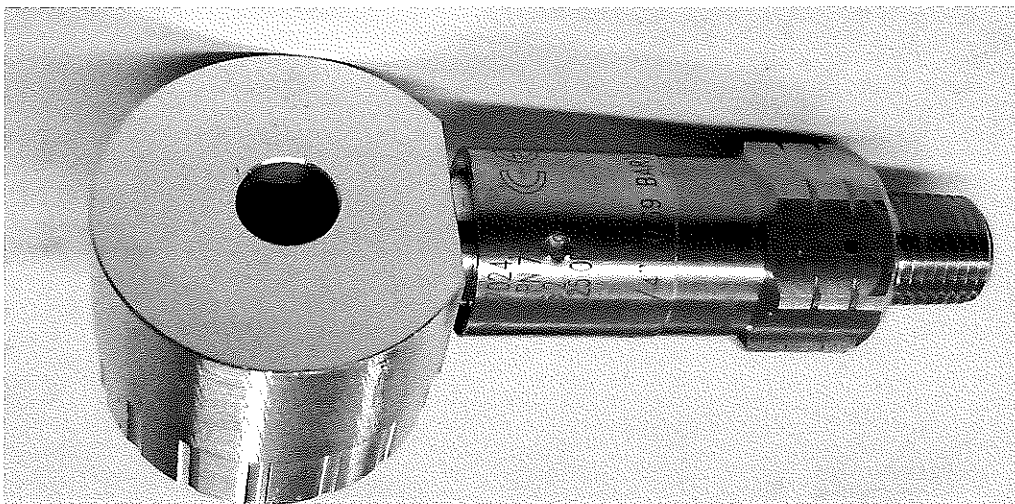
GPW



GAS PRESSURE RELIEF VALVE SAFETY WHISTLE

THIS IS A SAFETY VALVE THAT WILL BE INSTALLED AFTER THE PRESSURE REGULATOR OUTSIDE THE DWELLING, IN THE EVENT THAT THE GAS REGULATOR FAILS OR THE LINE IS OVER PRESSURIZED. THIS HIGH PRESSURE VALVE IS DESIGNED TO HELP ALLEVIATE THE EXCESSIVE GAS PRESSURE FROM ENTERING THE DWELLING. IT WILL RELEASE THE GAS INTO THE ATMOSPHERE AND SOUND AN ALARM TO WARN OCCUPANTS OF THE DWELLING TO EVACUATE AND CALL 911. THIS ALARM WILL SOUND AT APPROXIMATELY 80 DECIBELS.

THIS VALVE IS 100% MECHANICAL AND DOES NOT REQUIRE BATTERIES OR ELECTRICITY TO OPERATE



Email : GPW.SAFETY.WHISTLE@GMAIL.COM