



The following data is from Trinity EMS electronic Patient Care Reports. This data is from calls in all 13 communities Trinity provides service for. Only data from January 2021 opioid related calls are included

Trinity EMS Inc provides EMS services for the following communities in MA: Boxford, Chelmsford, Dunstable, Groveland, Haverhill, Lowell, and Dracut. In NH: Atkinson, Danville, Hampstead, Newton, Plaistow, and Sandown.

Only opiate overdoses that Trinity EMS Inc responded to are included. If someone from one of the communities listed above overdosed in another community not listed, it will not be represented in this data set.

System wide, Trinity treated 83 patients with an opioid related issue in January 2021.

Row Labels	Count of Date
LOWELL	31
HAVERHILL	18
(blank)	11
DRACUT	6
SANDOWN	2
PLAISTOW	1
MERRIMAC	1
ROXBURY	1
CHELMSFORD	1
METHUEN	1
SALEM	1
REVERE	1
BURLINGTON	1
HAMPTON	1
CHARLESTOWN	1
STONEHAM	1
TEWKSBURY	1
LYNN	1
BRADFORD	1
MARSHFIELD	1
<b>Grand Total</b>	<b>83</b>

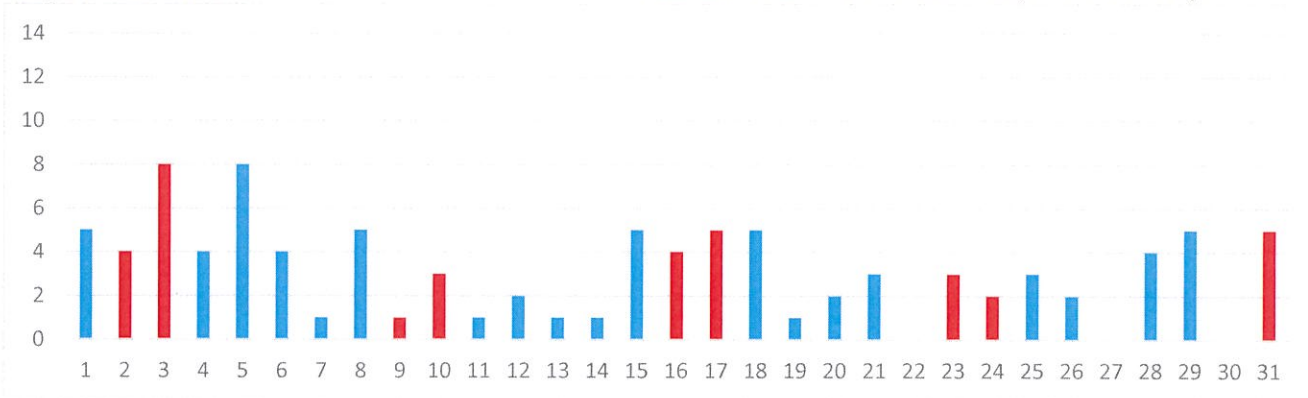
Overdoses: 97 or 3.1 per day

Day of the week:

Day	Mon	Tue	Wed	Thu	Fri	Sat	Sun	
Count	13	13	7	9	20	12	23	97
Average	3.3	3.3	1.8	2.3	4.0	2.4	4.6	

Day of the month:

Note: Red columns are Saturdays and Sundays



Hour of the day:

0	1	2	3	4	5	6	7	8	9	10	11	12	13	14	15	16	17	18	19	20	21	22	23
2	5	2	0	3	3	3	0	1	2	3	4	4	3	3	10	6	10	4	5	7	5	4	8

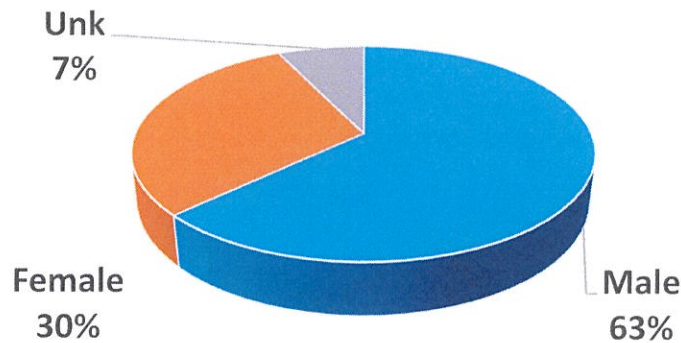
97

Section of the city:

Profile of patient

Neighborhood	Count
Acre	5
Back Central	16
Belvidere	2
Centralville	17
Downtown	24
Highlands	9
Lower Belvidere	0
Lower Highlands	15
Pawtucketville	6
Sacred Heart	3
South Lowell	0
<b>Total</b>	<b>97</b>

Sex	Count	Avg Age	Range
Female	29	45	12-67
Male	61	42	3-75



Age	#
12 and U	2
13-15	0
16-17	1
18-21	1
22	0
23	1
24	0
25	1
26	2
27	2
28	3
29	0
30	0
31	2
32	2
33	0
34	2
35	2
36	5
37	8
38	0
39	2
40	9
41	0
42	0
43	2
44	1
45	3
46	2
47	7
48	0
49	3
50	4
51-55	5
56-60	6
61-65	8
66-70	3
71 and up	1
Unk	7

20-Jan	20-Feb	20-Mar	20-Apr	20-May	20-Jun	20-Jul	20-Aug	20-Sep	20-Oct	20-Nov	20-Dec	21-Jan
78	84	75	96	119	96	91	103	126	94	108	74	97
2.5	2.9	2.4	3.2	3.8	3.2	2.9	3.3	4.2	3.0	3.6	2.4	3.1



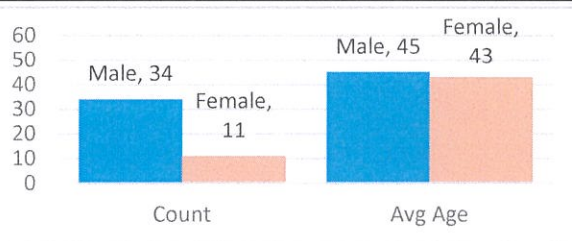
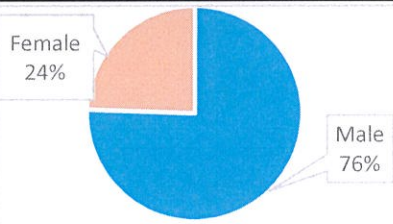
# Categorized Opiate Report:

Jan-21

Lowell, MA

## Priority of patient

Priority 1	26
Priority 2	10
Priority 3	9



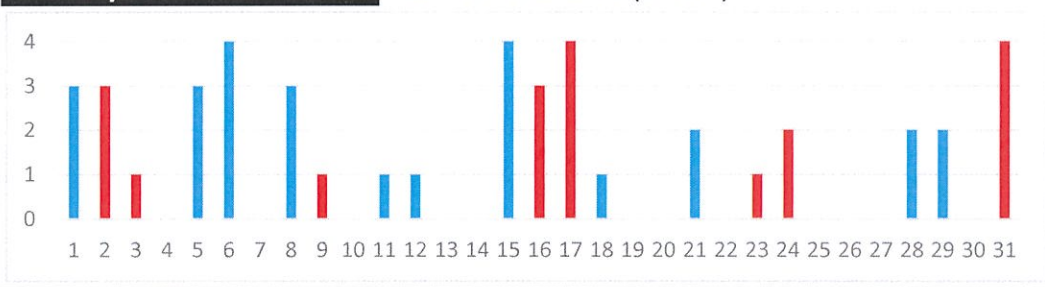
### Age

12 and U	0
13-15	0
16-17	0
18-21	1
22	0
23	0
24	0
25	0
26	1
27	1
28	0
29	0
30	0
31	2
32	0
33	0
34	0
35	1
36	4
37	5
38	1
39	0
40	7
41	0
42	0
43	2
44	1
45	2
46	1
47	3
48	0
49	2
50	1
51-55	1
56-60	3
61-65	4
66+	2
Unk	0

### Day of the week:

Day	#	Avg
Mon	2	0.5
Tue	4	1.0
Wed	4	1.0
Thu	4	1.0
Fri	12	2.4
Sat	8	1.6
Sun	11	2.2

## Day of the month: Red are weekends (below)



### Hour of the day:

Hour	Count
0	0
1	1
2	2
3	0
4	0
5	0
6	1
7	0
8	0
9	1
10	1
11	2
12	2
13	2
14	2
15	7
16	5
17	3
18	2
19	4
20	2
21	3
22	2
23	3
24	0
25	0
26	0
27	0
28	0
29	0
30	0
31	2

### Location of patient

Location	#
Private Residence	25
Public Location- Inside	6
Public Location- Outside	13
Residential Institution	1

### Narcan used by:

Lowell FD	5	Lowell PD	5
Trinity ALS	0	Trinity BLS	15
LGH ALS	1	Other	7
Park Ranger	0		

### Narcan doses

1-2mg - 14	32
4mg - 8	33
8mg - 5	34
12mg+ - 3	35
	36
	37
	38
	39
	40
	41
	42
	43
	44
	45
	46
	47
	48
	49
	50
	51
	52
	53
	54
	55
	56
	57
	58
	59
	60

### Neighborhood

Acre - 2	Back Central - 9	Centralville - 5	Downtown - 14	Highlands - 2
Lwr Highlands - 7	Pawtucketville - 2	Sacred Heart - 3	South Lowell - 1	

### Home town of pt

Charlestown - 1, Dracut - 1, Haverhill - 2, Lowell - 31, Lynn - 1, Marshfield - 1, Methuen - 1, Tewksbury - 1, Unknown - 6
--

### Last 12 months All ORI calls

20-Jan	20-Feb	20-Mar	20-Apr	20-May	20-Jun	20-Jul	20-Aug	20-Sep	20-Oct	20-Nov	20-Dec	21-Jan
32	31	28	48	57	49	44	41	56	26	35	42	45
1.0	1.1	0.9	1.6	1.8	1.6	1.4	1.3	1.9	0.8	1.2	1.4	1.5

### Last 12 months Priority 1 only

20-Jan	20-Feb	20-Mar	20-Apr	20-May	20-Jun	20-Jul	20-Aug	20-Sep	20-Oct	20-Nov	20-Dec	21-Jan
21	17	19	26	31	25	22	22	27	15	18	31	26
0.7	0.6	0.6	0.9	1.0	0.8	0.7	0.7	0.9	0.5	0.6	1.0	0.8

	ORI - daily average					Yr avg	Priority 1 only- daily average					Yr avg	Age
	Q1	Q2	Q3	Q4			Q1	Q2	Q3	Q4			
2012	0.5	0.8	0.7	0.6	0.7	2012	0.1	0.2	0.3	0.3	0.2	51-55	1
2013	0.7	1.2	1.1	0.6	0.9	2013	0.3	0.4	0.5	0.2	0.4	56-60	3
2014	0.8	1.4	1.6	1.4	1.3	2014	0.3	0.6	0.8	0.9	0.7	61-65	4
2015	1.4	1.7	1.9	1.4	1.6	2015	0.8	0.7	0.9	0.8	0.8	66+	2
2016	1.7	1.6	2.0	2.3	1.9	2016	1.0	1.0	0.9	1.3	1.1	Unk	0
2017	2.0	2.3	2.8	1.8	2.2	2017	1.2	1.4	1.6	1.0	1.3		
2018	2.1	2.0	2.6	2.2	2.2	2018	1.2	1.1	1.3	1.4	1.3		
2019	1.5	1.5	1.4	1.4	1.5	2019	0.7	0.9	0.9	0.9	0.9		
2020	1.0	1.7	1.5	1.1	1.3	2020	0.6	0.9	0.8	0.7	0.8		
2021	1.5				1.5	2021	0.8				0.8		