

Overdoses: 101 or 3.3 per day

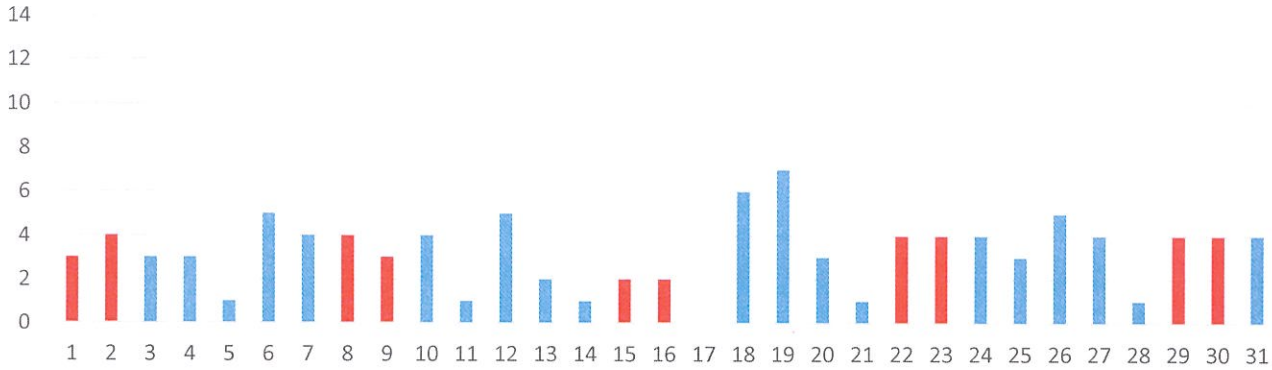
Day of the week:

Day	Mon	Tue	Wed	Thu	Fri	Sat	Sun
Count	15	13	18	14	7	17	17
Average	3.0	3.3	4.5	3.5	1.8	3.4	3.4

101

Day of the month:

Note: Red columns are Saturdays and Sundays



Hour of the day:

0	1	2	3	4	5	6	7	8	9	10	11	12	13	14	15	16	17	18	19	20	21	22	23
9	2	6	5	2	0	2	2	0	2	1	2	6	8	2	6	5	7	6	7	8	3	4	6

101

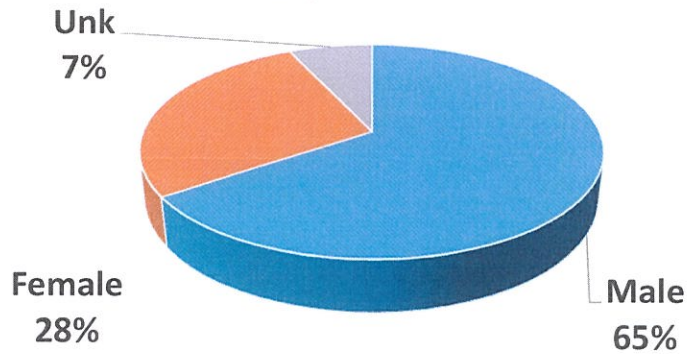
Section of the city:

Profile of patient

Neighborhood	Count
Acre	13
Back Central	20
Belvidere	2
Centralville	11
Downtown	23
Highlands	7
Lower Belvidere	3
Lower Highlands	4
Pawtucketville	11
Sacred Heart	5
South Lowell	2

101

Sex	Count	Avg Age	Range
Female	28	40	13-70
Male	66	40	20-73



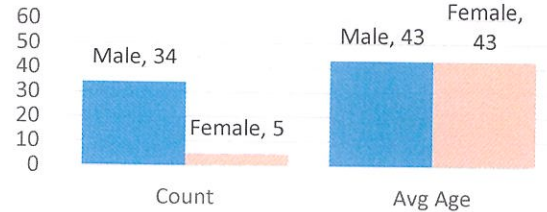
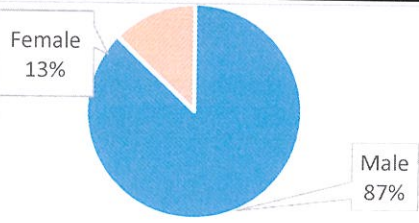
20-May	20-Jun	20-Jul	20-Aug	20-Sep	20-Oct	20-Nov	20-Dec	21-Jan	21-Feb	21-Mar	21-Apr	21-May
119	96	91	103	126	94	108	74	97	99	107	125	101
3.8	3.2	2.9	3.3	4.2	3.0	3.6	2.4	3.1	3.5	3.5	4.2	3.3

Age	#
12 and U	0
13-15	1
16-17	2
18-21	3
22	1
23	0
24	0
25	1
26	7
27	1
28	2
29	2
30	5
31	1
32	3
33	1
34	5
35	2
36	3
37	5
38	1
39	2
40	3
41	5
42	0
43	3
44	2
45	0
46	2
47	2
48	2
49	0
50	5
51-55	11
56-60	6
61-65	3
66-70	1
71 and up	1
Unk	7

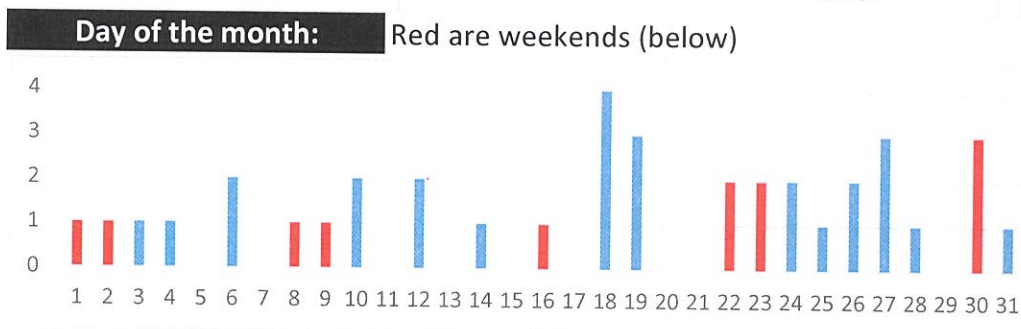


# Categorized Opiate Report: May-21 Lowell, MA

Priority of patient	
Priority 1	24
Priority 2	5
Priority 3	10



Day of the week:	#	Avg
Mon	6	1.2
Tue	7	1.8
Wed	7	1.8
Thu	5	1.3
Fri	2	0.5
Sat	4	0.8
Sun	8	1.6



Age	Count
12 and U	0
13-15	0
16-17	0
18-21	0
22	0
23	0
24	0
25	0
26	3
27	1
28	0
29	1
30	0
31	1
32	1
33	1
34	2
35	1
36	2
37	1
38	0
39	0
40	3
41	2
42	0
43	2
44	0
45	0
46	0
47	2
48	2
49	0
50	4
51-55	7
56-60	1
61-65	2
66+	0
Unk	0

Hour of the day:	0	1	2	3	4	5	6	7	8	9	10	11	12	13	14	15	16	17	18	19	20	21	22	23
Count	3	0	3	4	0	0	1	1	0	0	0	1	4	4	1	2	2	1	3	2	3	1	0	3

Location of patient	#
Private Residence	13
Public Location- Inside	1
Public Location- Outside	24
Residential Instituion	1

Narcan used by:			
Lowell FD	6	Lowell PD	1
Trinity ALS	1	Trinity BLS	10
LGH ALS	2	Other	8
Park Ranger	0		

Narcan doses	Count
2mg - 6	32
4mg - 10	33
6mg - 3	34
7mg+ - 5	35
	36
	37
	38
	39
	40
	41
	42
	43
	44
	45
	46
	47
	48
	49
	50
	51
	52
	53
	54
	55
	56
	57
	58
	59
	60
	61
	62
	63
	64
	65
	66
	67
	68
	69
	70
	71
	72
	73
	74
	75
	76
	77
	78
	79
	80
	81
	82
	83
	84
	85
	86
	87
	88
	89
	90
	91
	92
	93
	94
	95
	96
	97
	98
	99
	100

Neighborhood	Count
Acre - 7	7
Back Central - 11	11
Belvidere - 1	1
Centralville - 3	3
Downtown - 12	12
Highlands - 1	1
Lwr Highlands - 1	1
Pawtucketville - 1	1
Sacred Heart - 2	2

Home town of pt	Count
Chelmsford - 1, Dracut - 2, Lowell - 27, Mattapan - 1, Medford - 1, Meriden - 1, Methuen - 2, Westford - 2, Unknown - 2	39
	40
	41
	42
	43
	44
	45
	46
	47
	48
	49
	50
	51
	52
	53
	54
	55
	56
	57
	58
	59
	60
	61
	62
	63
	64
	65
	66
	67
	68
	69
	70
	71
	72
	73
	74
	75
	76
	77
	78
	79
	80
	81
	82
	83
	84
	85
	86
	87
	88
	89
	90
	91
	92
	93
	94
	95
	96
	97
	98
	99
	100

Last 12 months All ORI calls												
20-May	20-Jun	20-Jul	20-Aug	20-Sep	20-Oct	20-Nov	20-Dec	21-Jan	21-Feb	21-Mar	21-Apr	21-May
57	49	44	41	56	26	35	42	45	38	44	47	39
1.8	1.6	1.4	1.3	1.9	0.8	1.2	1.4	1.5	1.4	1.4	1.6	1.3

Last 12 months Priority 1 only												
20-May	20-Jun	20-Jul	20-Aug	20-Sep	20-Oct	20-Nov	20-Dec	21-Jan	21-Feb	21-Mar	21-Apr	21-May
31	25	22	22	27	15	18	31	26	24	25	30	24
1.0	0.8	0.7	0.7	0.9	0.5	0.6	1.0	0.8	0.9	0.8	1.0	0.8

ORI - daily average										
2011	2012	2013	2014	2015	2016	2017	2018	2019	2020	2021
0.5	0.7	0.9	1.3	1.6	1.9	2.2	2.2	1.5	1.3	1.4

Priority 1 only- daily average										
2011	2012	2013	2014	2015	2016	2017	2018	2019	2020	2021
0.1	0.2	0.4	0.7	0.8	1.1	1.3	1.3	0.9	0.8	0.9

Race of Patient						
	This Month:	Q1 21	Q2 21	Q3 21	Q4 21	2021
Black / African American	2	10	7			17
Hispanic / Latinx	13	35	25			60
White	24	67	48			115
Other / Not Given	0	15	6			21



The following data is from Trinity EMS electronic Patient Care Reports. This data is from calls in all 13 communities Trinity provides service for. Only data from May 2021 opioid related calls are included

Trinity EMS Inc provides EMS services for the following communities in MA: Boxford, Chelmsford, Dunstable, Groveland, Haverhill, Lowell, and Dracut. In NH: Atkinson, Danville, Hampstead, Newton, Plaistow, and Sandown.

Only opiate overdoses that Trinity EMS Inc responded to are included. If someone from one of the communities listed above overdosed in another community not listed, it will not be represented in this data set.

System wide, Trinity treated 65 patients with an opioid related issue in May 2021.

<b>Row Labels</b>	<b>Count of Date</b>
LOWELL	28
HAVERHILL	12
(blank)	5
METHUEN	3
DRACUT	3
WESTFORD	2
READING	1
NASHUA	1
CHELMSFORD	1
SAUGUS	1
QUINCY	1
FITCHBURG	1
SANDOWN	1
MERIDEN	1
DERRY	1
MATTAPAN	1
BEDFORD	1
MEDFORD	1
<b>Grand Total</b>	<b>65</b>