

Age	#
12 and U	1
13-15	0
16-17	0
18-21	1
22	0
23	2
24	2
25	0
26	3
27	2
28	2
29	1
30	2
31	3
32	0
33	4
34	2
35	3
36	4
37	2
38	5
39	4
40	2
41	3
42	1
43	0
44	3
45	3
46	1
47	0
48	1
49	2
50	1
51-55	12
56-60	2
61-65	0
66-70	1
71 and up	1
Unk	6

Overdoses: 82 or 2.6 per day

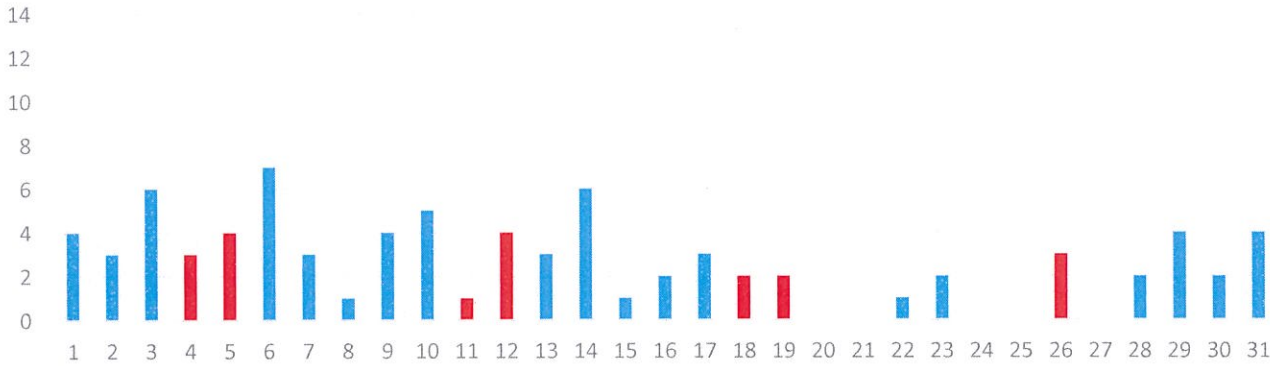
Day of the week:

Day	Mon	Tue	Wed	Thu	Fri	Sat	Sun
Count	10	11	11	13	18	6	13
Average	2.5	2.8	2.2	2.6	3.6	1.5	3.3

82

Day of the month:

Note: Red columns are Saturdays and Sundays



Hour of the day:

0	1	2	3	4	5	6	7	8	9	10	11	12	13	14	15	16	17	18	19	20	21	22	23
2	1	3	3	1	3	2	2	6	4	3	6	5	5	4	5	5	2	2	3	2	4	5	4

82

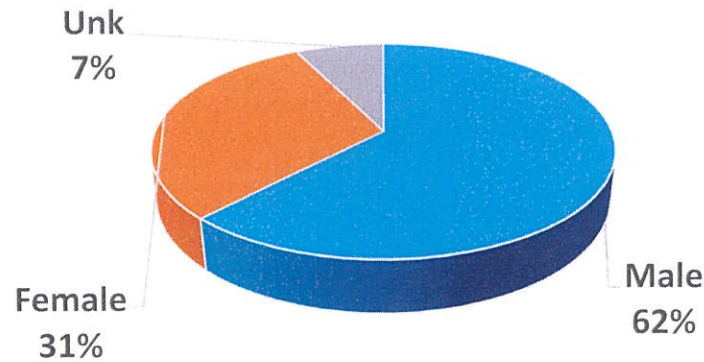
Section of the city:

Neighborhood	Count
Acre	16
Back Central	13
Belvidere	6
Centralville	9
Downtown	14
Highlands	7
Lower Belvidere	4
Lower Highlands	6
Pawtucketville	6
Sacred Heart	0
South Lowell	1

82

Profile of patient

Sex	Count	Avg Age	Range
Female	25	38	1-74
Male	51	40	23-66



20-Dec	21-Jan	21-Feb	21-Mar	21-Apr	21-May	21-Jun	21-Jul	21-Aug	21-Sep	21-Oct	21-Nov	21-Dec
74	97	99	107	125	101	110	116	126	137	127	85	82
2.4	3.1	3.5	3.5	4.2	3.3	3.7	3.7	4.1	4.6	4.1	2.8	2.6



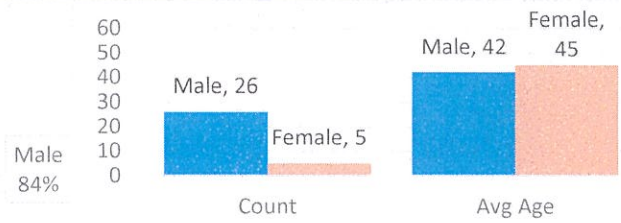
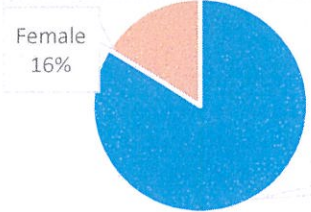
### Categorized Opiate Report:

Dec-21

Lowell, MA

#### Priority of patient

Priority 1	21
Priority 2	2
Priority 3	8



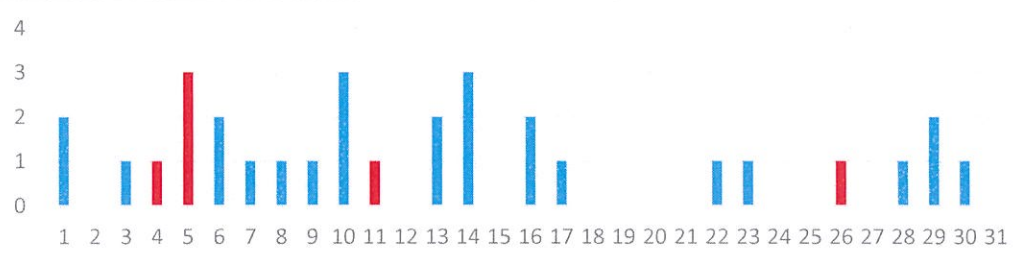
#### Age

12 and U	0
13-15	0
16-17	0
18-21	0
22	0
23	0
24	0
25	0
26	0
27	1
28	0
29	0
30	1
31	2
32	0
33	1
34	1
35	2
36	2
37	0
38	1
39	2
40	1
41	3
42	1
43	0
44	2
45	1
46	0
47	0
48	1
49	0
50	1
51-55	4
56-60	3
61-65	0
66+	1
Unk	0

Day of the week:	#	Avg
Mon	4	1.0
Tue	5	1.3
Wed	6	1.2
Thu	5	1.0
Fri	5	1.0
Sat	2	0.5
Sun	4	1.0

#### Day of the month:

Red are weekends (below)



Hour of the day:	0	1	2	3	4	5	6	7	8	9	10	11	12	13	14	15	16	17	18	19	20	21	22	23
	1	0	0	2	1	1	1	1	0	0	1	1	1	3	2	2	2	1	1	3	0	3	2	2

Location of patient	#
Private Residence	10
Public Location- Inside	3
Public Location- Outside	17
Residential Instituion	1

Narcan used by:			
Lowell FD	7	Lowell PD	4
Trinity ALS	0	Trinity BLS	8
LGH ALS	0	Other	5
Park Ranger	0		

Narcan doses	
2mg - 1	33
4mg - 15	34
6mg - 1	35
8mg - 4	36

Neighborhood	Acre - 9	Back Central - 7	Belvidere - 1	Centralville - 2	Downtown - 3
Highlands - 3	Lwr Belvidere - 3	Lwr Highlands - 2	South Lowell - 1		

Home town of pt	Dracut - 2, Lowell - 20, North Billerica - 2, Sunny Isles Beach - 1, Unknown - 6
-----------------	--

Last 12 months All ORI calls												
20-Dec	21-Jan	21-Feb	21-Mar	21-Apr	21-May	21-Jun	21-Jul	21-Aug	21-Sep	21-Oct	21-Nov	21-Dec
42	45	38	44	47	39	49	56	52	63	52	45	31
1.4	1.5	1.4	1.4	1.6	1.3	1.6	1.8	1.7	2.1	1.7	1.5	1.0

Last 12 months Priority 1 only												
20-Dec	21-Jan	21-Feb	21-Mar	21-Apr	21-May	21-Jun	21-Jul	21-Aug	21-Sep	21-Oct	21-Nov	21-Dec
31	26	24	25	30	24	33	32	31	44	29	28	21
1.0	0.8	0.9	0.8	1.0	0.8	1.1	1.0	1.0	1.5	0.9	0.9	0.7

ORI - daily average												
2011	2012	2013	2014	2015	2016	2017	2018	2019	2020	2021		
0.5	0.7	0.9	1.3	1.6	1.9	2.2	2.2	1.5	1.3	1.5		

Priority 1 only- daily average												
2011	2012	2013	2014	2015	2016	2017	2018	2019	2020	2021		
0.1	0.2	0.4	0.7	0.8	1.1	1.3	1.3	0.9	0.8	1.0		

Race of Patient						
	This Month:	Q1 21	Q2 21	Q3 21	Q4 21	2021
Black / African American	3	10	7	13	8	38
Hispanic / Latinx	6	35	38	60	35	168
White	17	67	76	80	71	294
Other / Not Given	5	15	14	18	14	61



The following data is from Trinity EMS electronic Patient Care Reports. This data is from calls in all 13 communities Trinity provides service for. Only data from December 2021 opioid related calls are included

Trinity EMS Inc provides EMS services for the following communities in MA: Boxford, Chelmsford, Dunstable, Groveland, Haverhill, Lowell, and Dracut. In NH: Atkinson, Danville, Hampstead, Newton, Plaistow, and Sandown.

Only opiate overdoses that Trinity EMS Inc responded to are included. If someone from one of the communities listed above overdosed in another community not listed, it will not be represented in this data set.

System wide, Trinity treated 59 patients with an opioid related issue in December 2021.

Row Labels	Count of Date
LOWELL	22
HAVERHILL	12
(blank)	12
NORTH BILLERICA	2
DRACUT	2
METHUEN	1
PELHAM	1
EAST HAMPSTEAD	1
SUNNY ISLES BEACH	1
TAUNTON	1
GLOUCESTER	1
MEDFORD	1
DANVILLE	1
LYNN	1
<b>Grand Total</b>	<b>59</b>