

**Christine McCall**  
*Assistant City Manager/DPD Director*

**Yovani Baez-Rose**  
*Deputy Director*

**MEMORANDUM**

TO: Eileen M. Donoghue, City Manager *EMD*

FROM: Christine McCall, Assistant City Manager/DPD Director

DATE: April 5, 2022

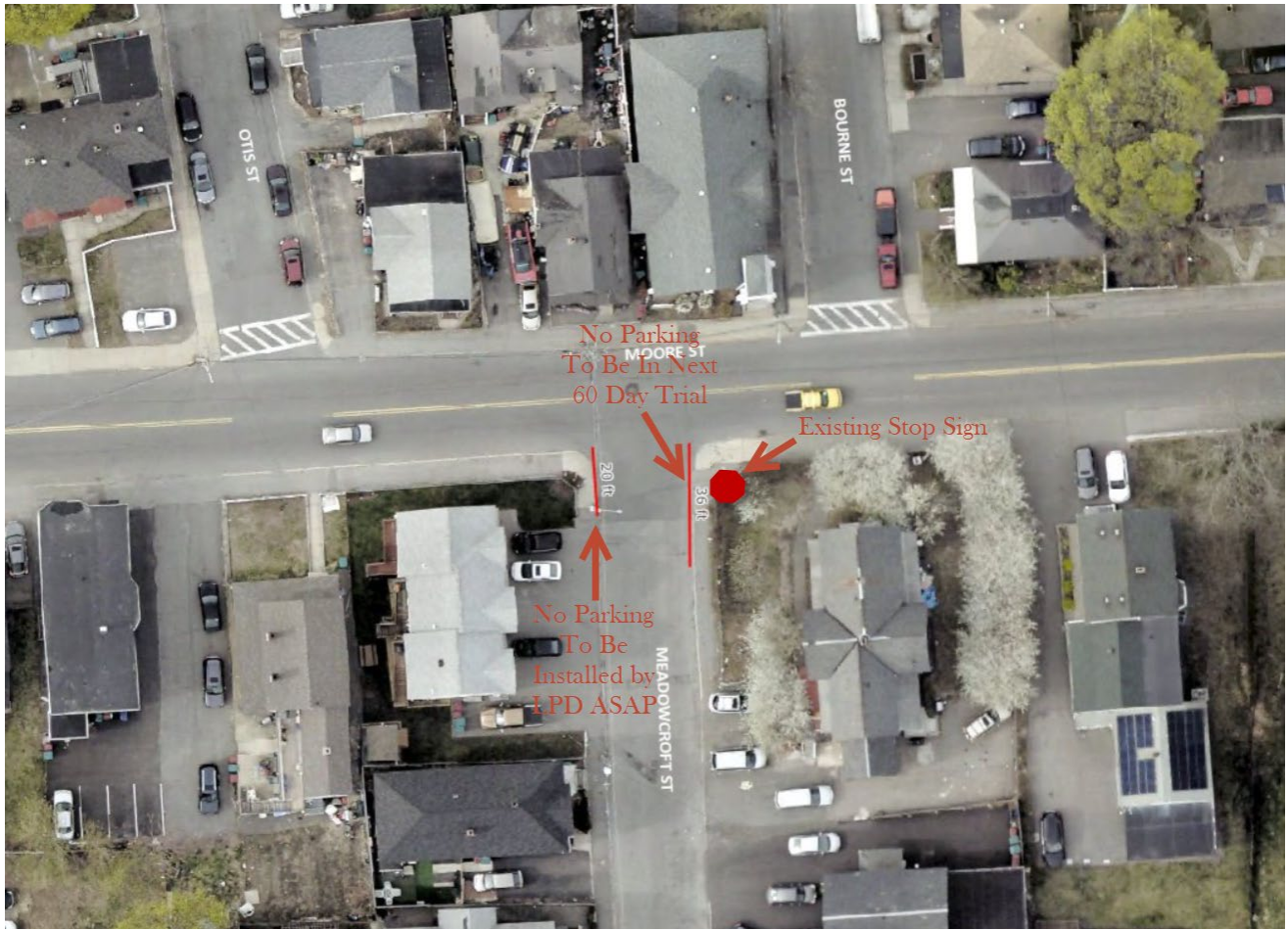
SUBJECT: MOTION OF 3/8/22 BY COUNCILOR SCOTT REQUESTING CITY MANAGER HAVE THE APPROPRIATE DEPARTMENT PLACE NO PARKING SIGNS OR PAINT NO PARKING MARKINGS ON THE CORNER OF MEADOWCROFT ST. AT MOORE ST. TO ALLOW TRUCK TURNING ACCESS

City staff conducted a site visit to the above location, as well as reviewed current ordinances to determine the feasibility of placing a “No Parking Here to Corner” sign on Meadowcroft Street.

Meadowcroft Street is a twenty-eight (28’) foot wide two-way road with parking allowed on both sides, which makes it difficult for larger vehicles to turn into the street from Moore Street if vehicles are parked too close to the intersection.

An ordinance prohibiting parking within twenty (20’) feet of an intersection already exists. A “No Parking Here to Corner” sign will be placed on the west side of Meadowcroft twenty (20’) feet from the intersection of Moore Street as soon as possible. The DPD will coordinate with LPD on installation. We anticipate this sign to be installed as soon as possible.

For the east side, there is a stop sign placed sixteen (16’) feet from the intersection of Moore Street, therefore, a sign placed twenty (20’) feet from the intersection would allow parking too close to the stop sign. A “No Parking Here to Corner” sign will be placed twenty (20’) feet from the stop sign, thirty six (36’) feet from the intersection. The ordinance for the No Parking sign on the east side will be in the next 60 Day Trial memo. We will aim to have this on the April 12, 2022 City Council Agenda.



AH/cmm

cc: Alan Heredia, Assistant Transportation Engineer  
John Cooper, Lowell Police Department