

# RECYCLE

THANK YOU FOR RECYCLING THESE:

## Cans



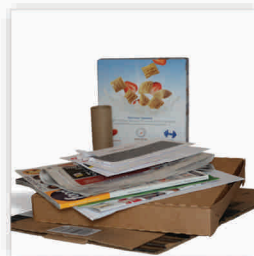
**Aluminum and Tin Cans**  
empty and rinse

## Glass



**Bottles and Jars**  
empty and rinse

## Paper & Cardboard



**Mixed Paper, Newspaper, Magazines, Cardboard**  
emptied and flattened

## Plastic Containers



**Kitchen, Laundry, Bath**  
empty and replace cap

**NO!**



Do Not Bag Recyclables  
No Garbage



No Plastic Bags or  
Plastic Wrap  
(return to retail)



No Food or Liquid  
(empty all containers)



No Clothing or Linens  
(use donation programs)



No Tangles  
(no hoses, wires,  
chains, or electronics)

**(978) 674-4309**  
Solid Waste & Recycling Office, DPW

**[www.LowellRecycle.org](http://www.LowellRecycle.org)**

Thank you for recycling.  Funded in part by MassDEP. Min. 30% recycled paper.